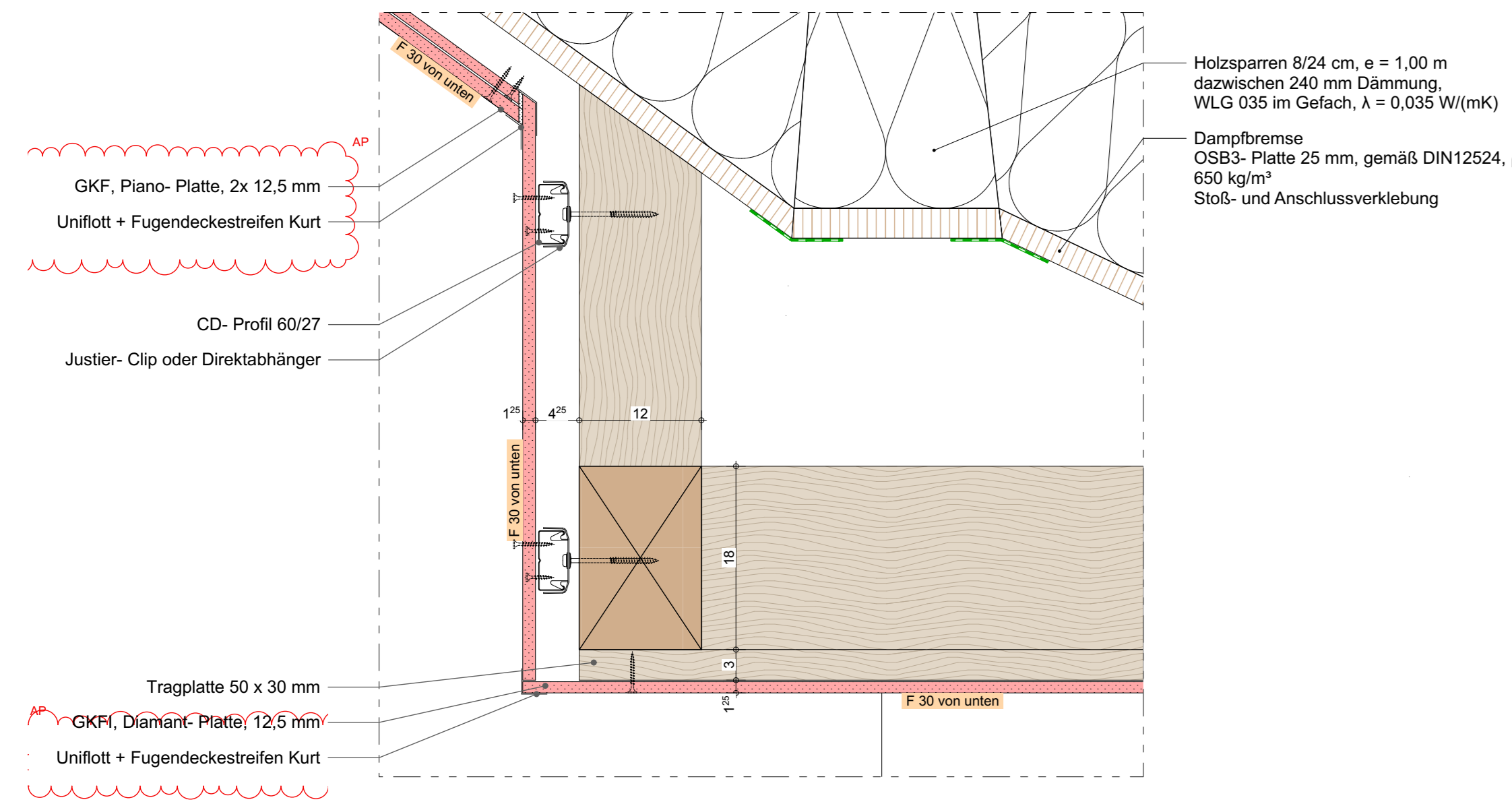
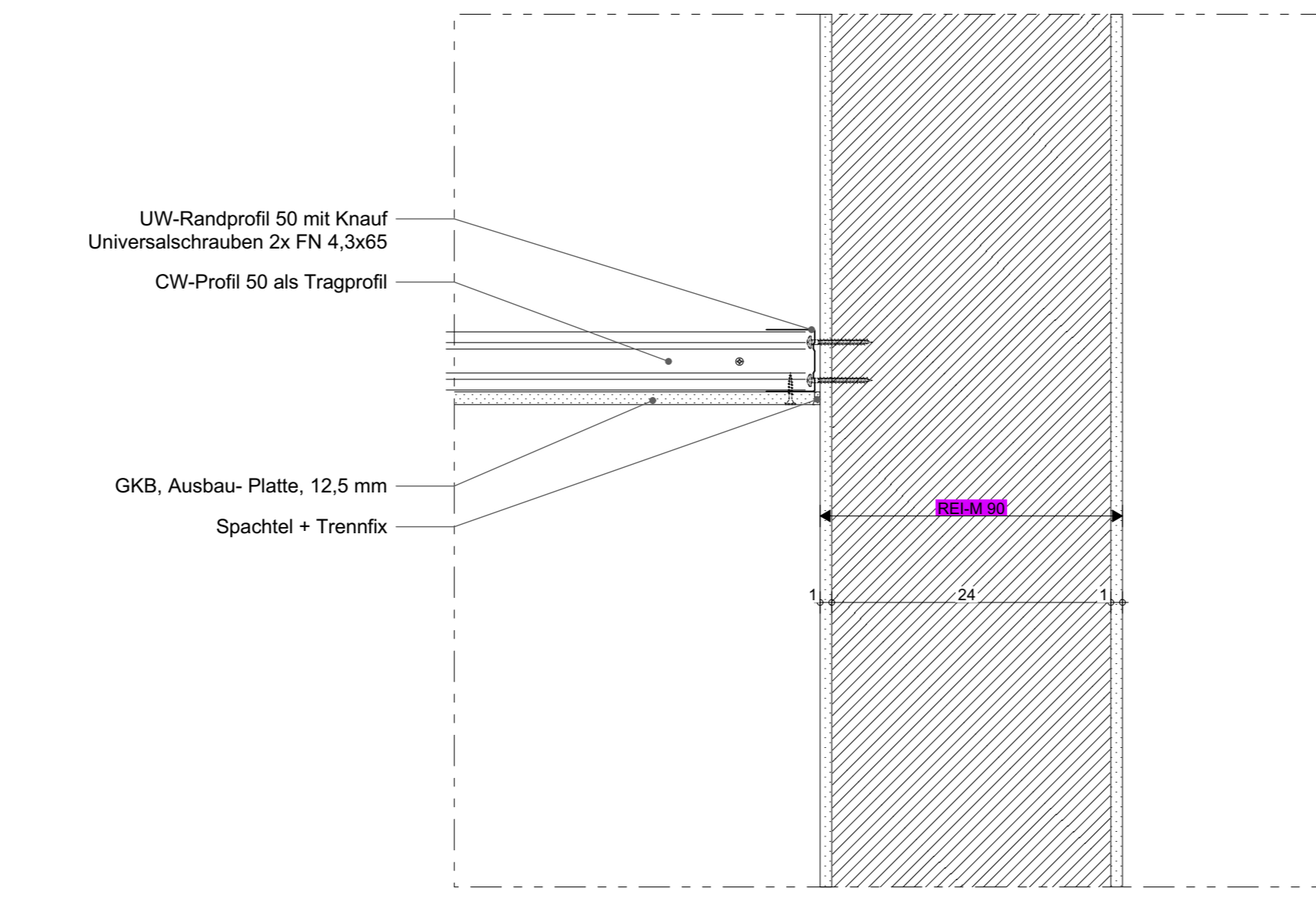


D- 55 Decke



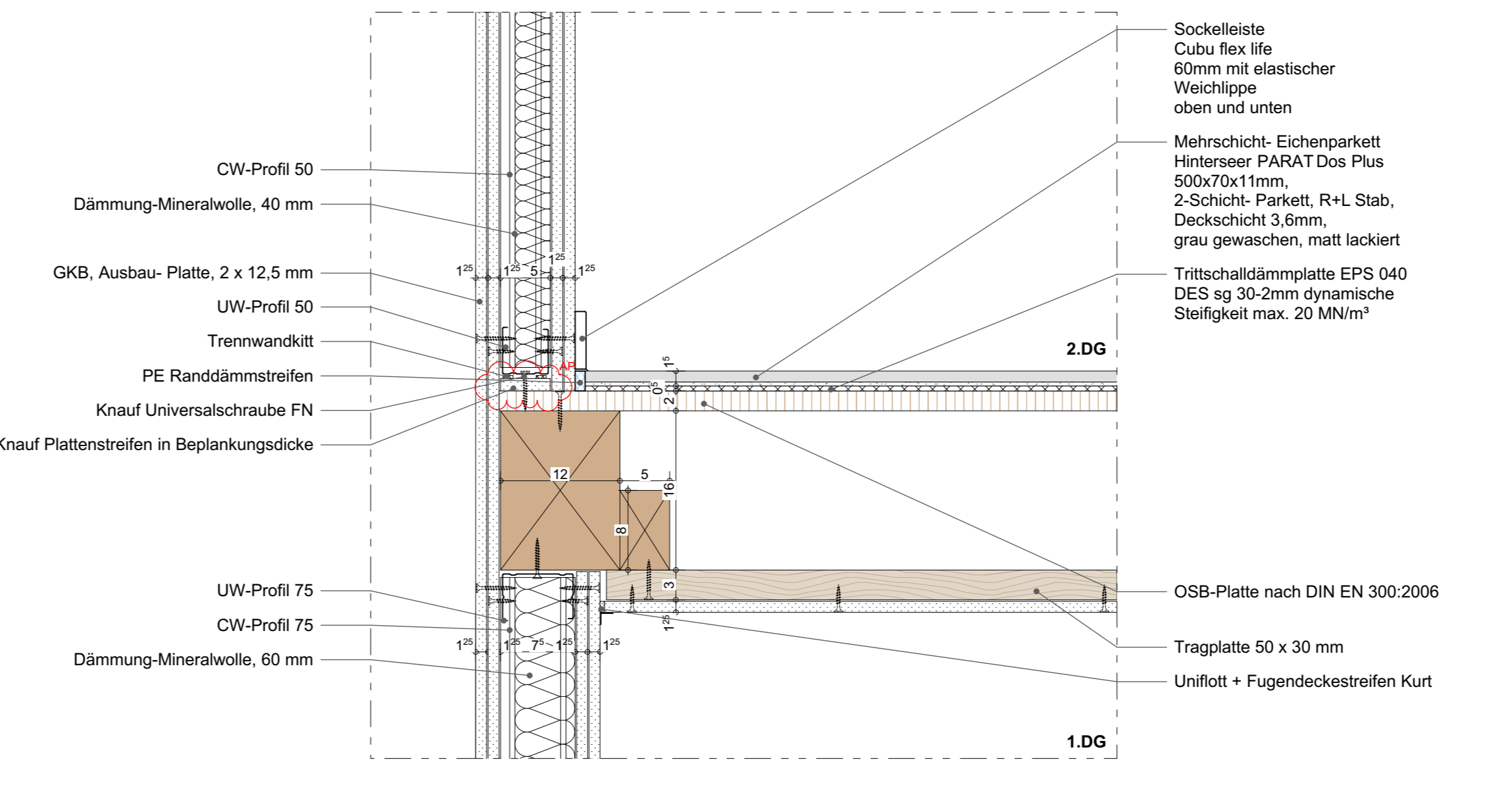
D- 56 Decke 1:5

D- 58 Decke



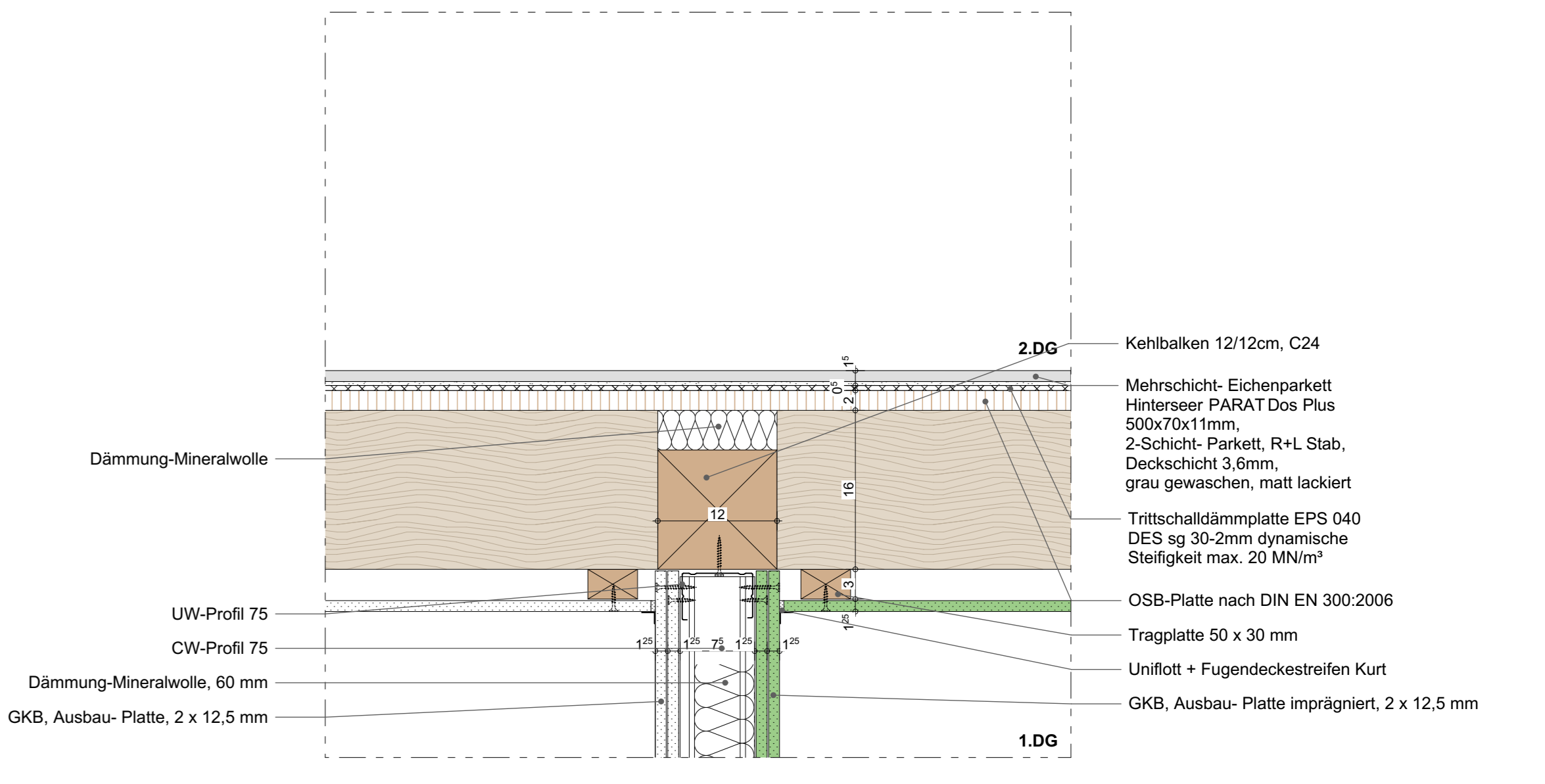
D- 59 Decke 1:5

D- 61 Decke



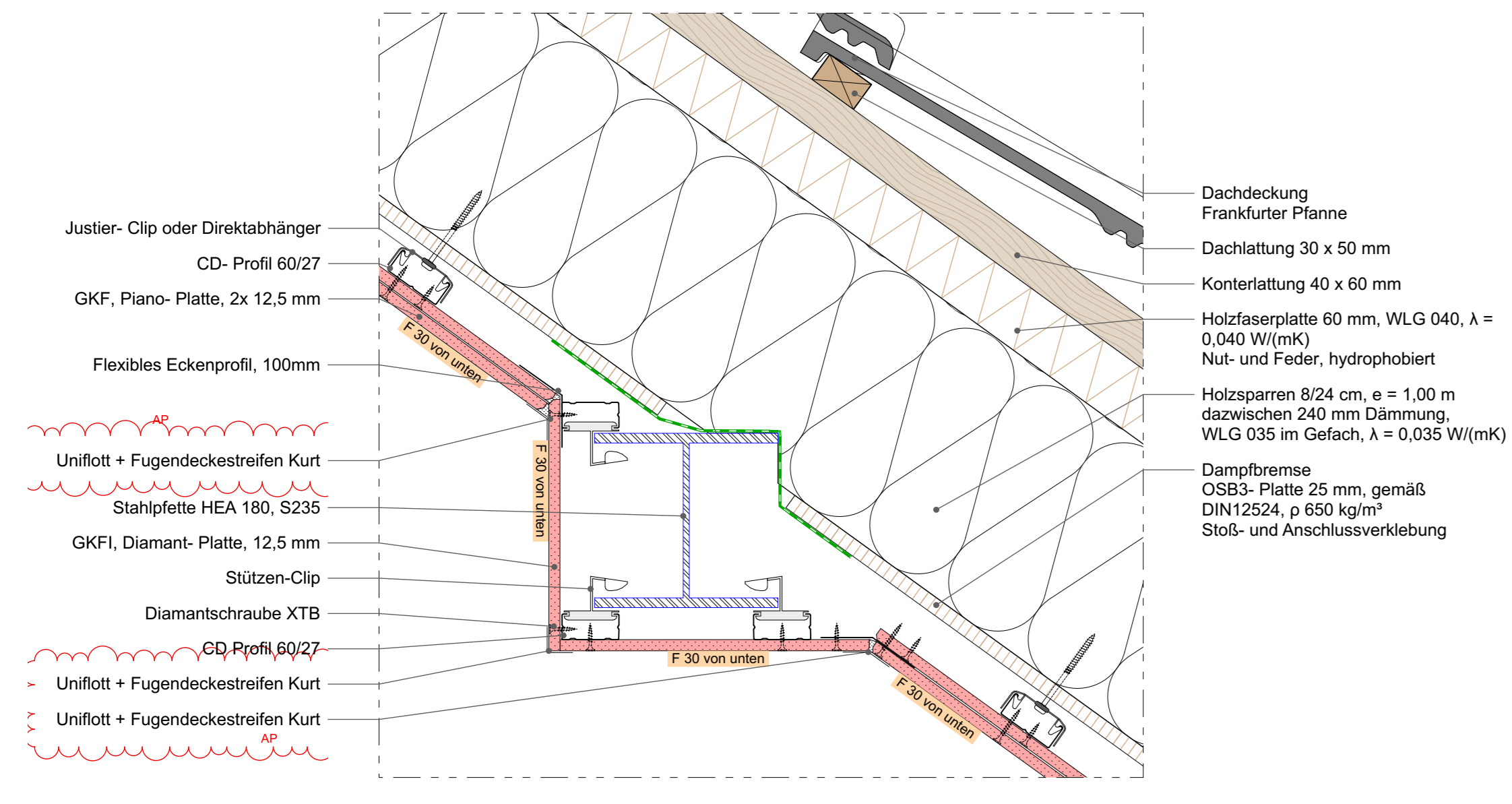
D- 62 Decke 1:5

D- 64 Decke



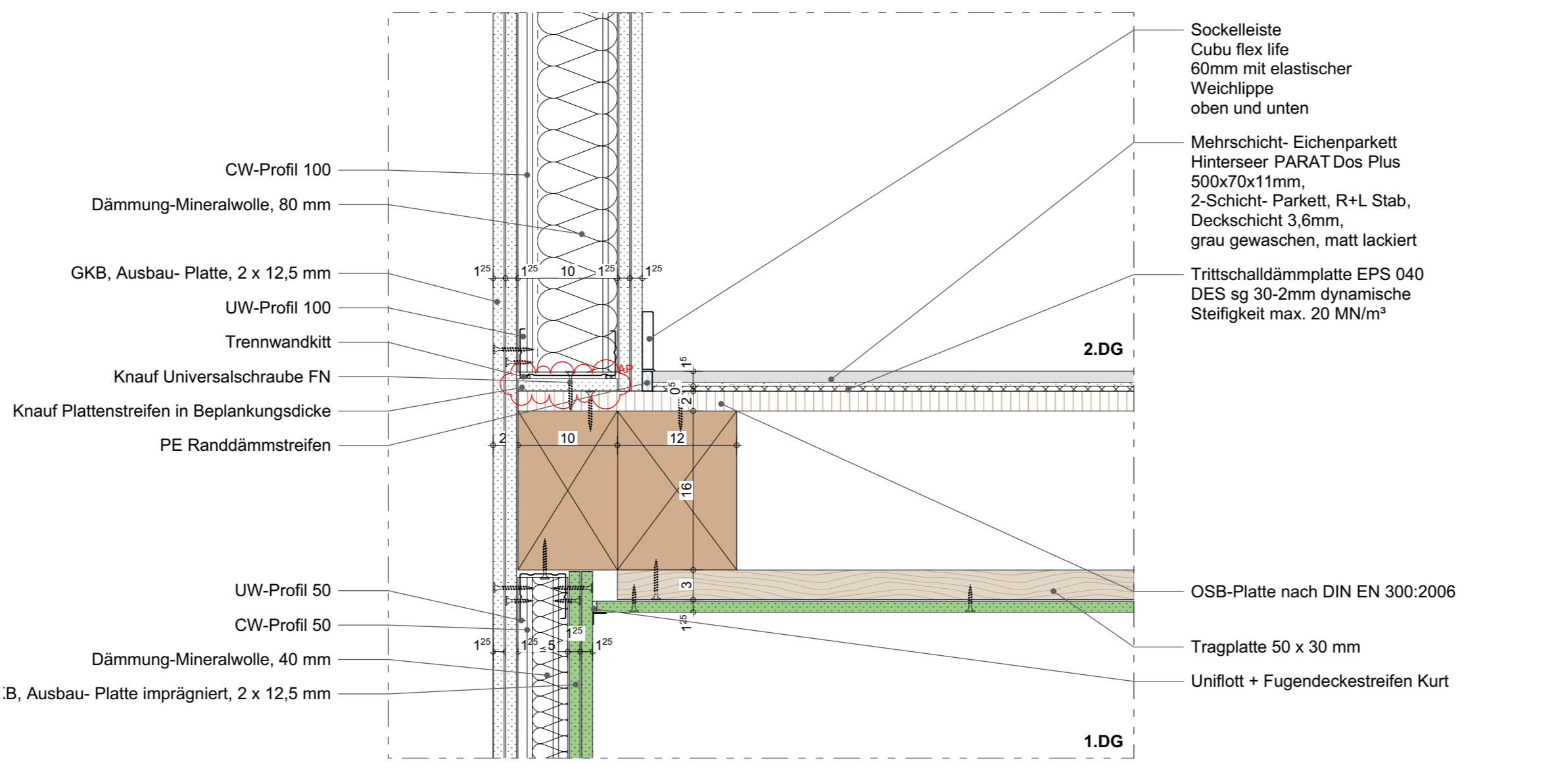
D- 65 Decke 1:5

D- 56 Decke



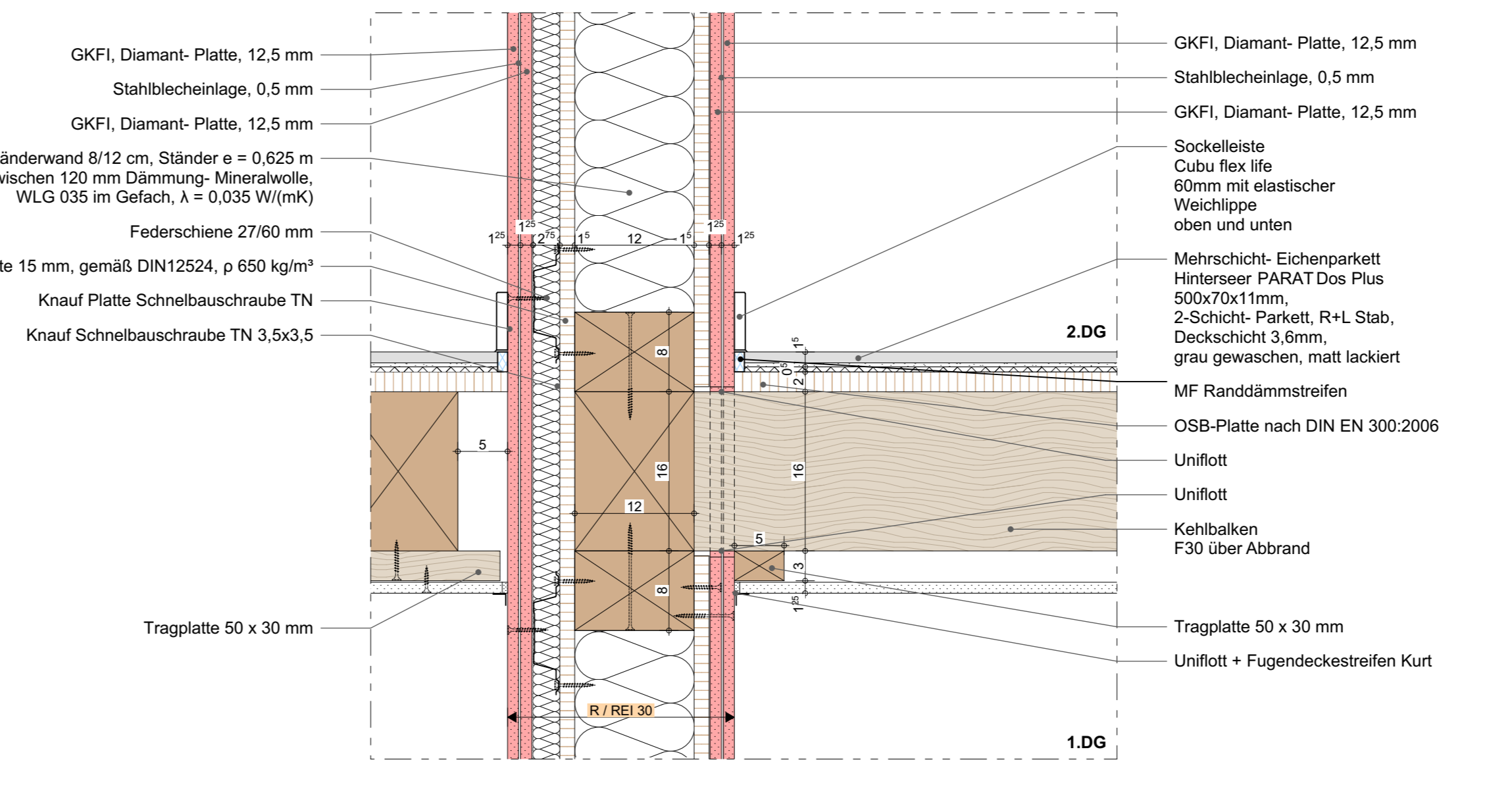
D- 57 Decke 1:5

D- 59 Decke



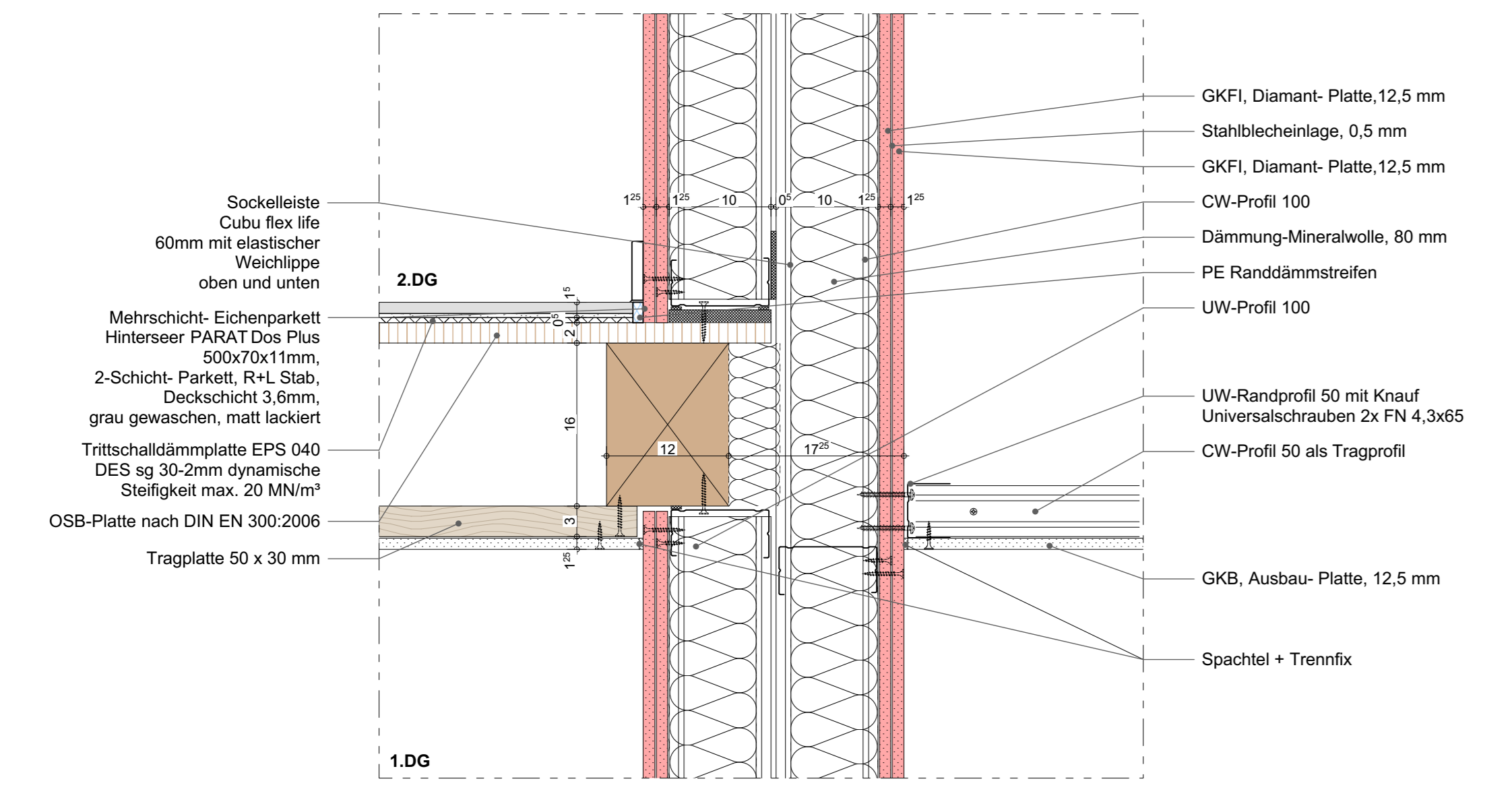
D- 60 Decke 1:5

D- 62 Decke



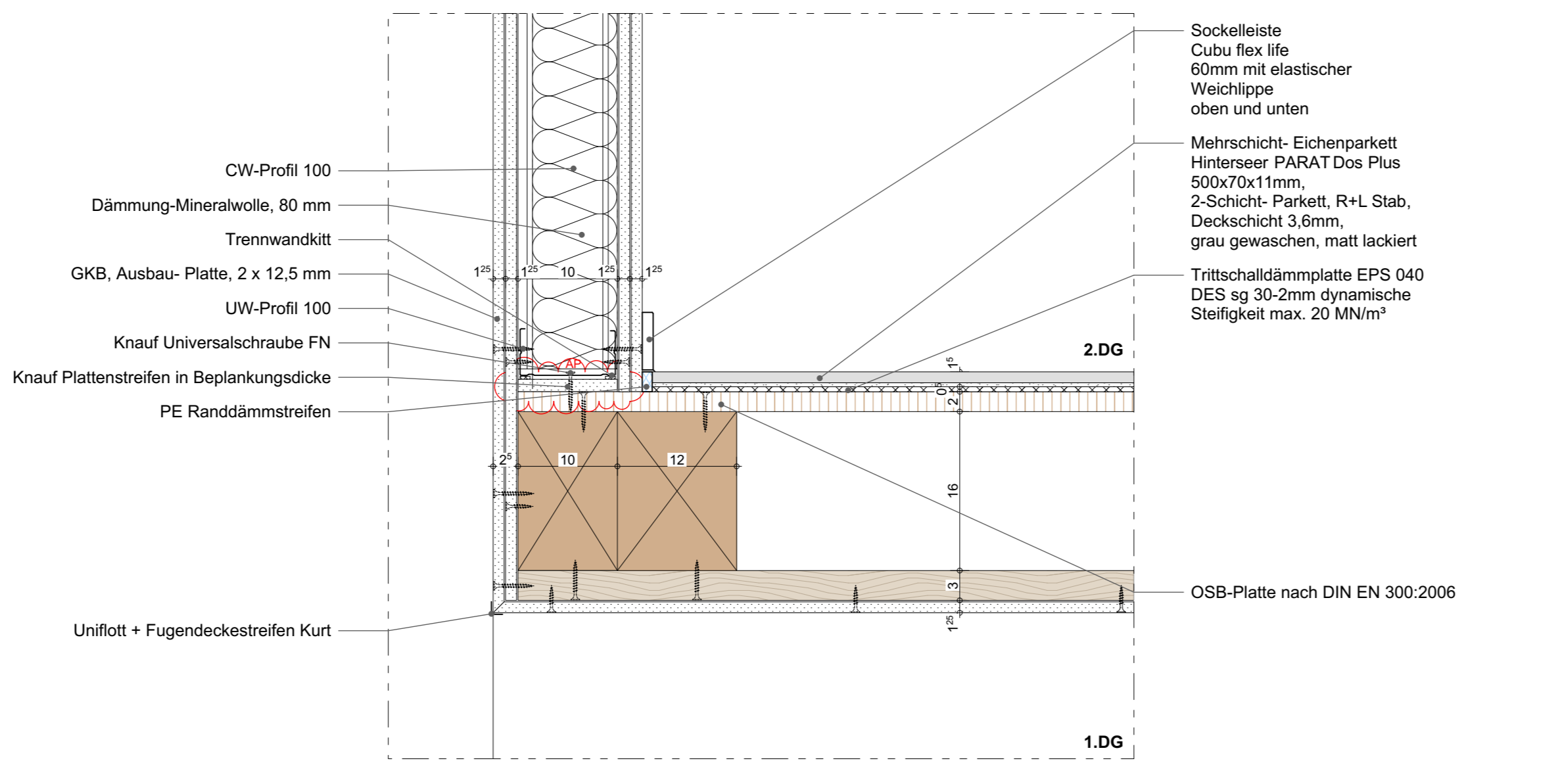
D- 63 Pfette Holz 1:5

D- 57 Decke



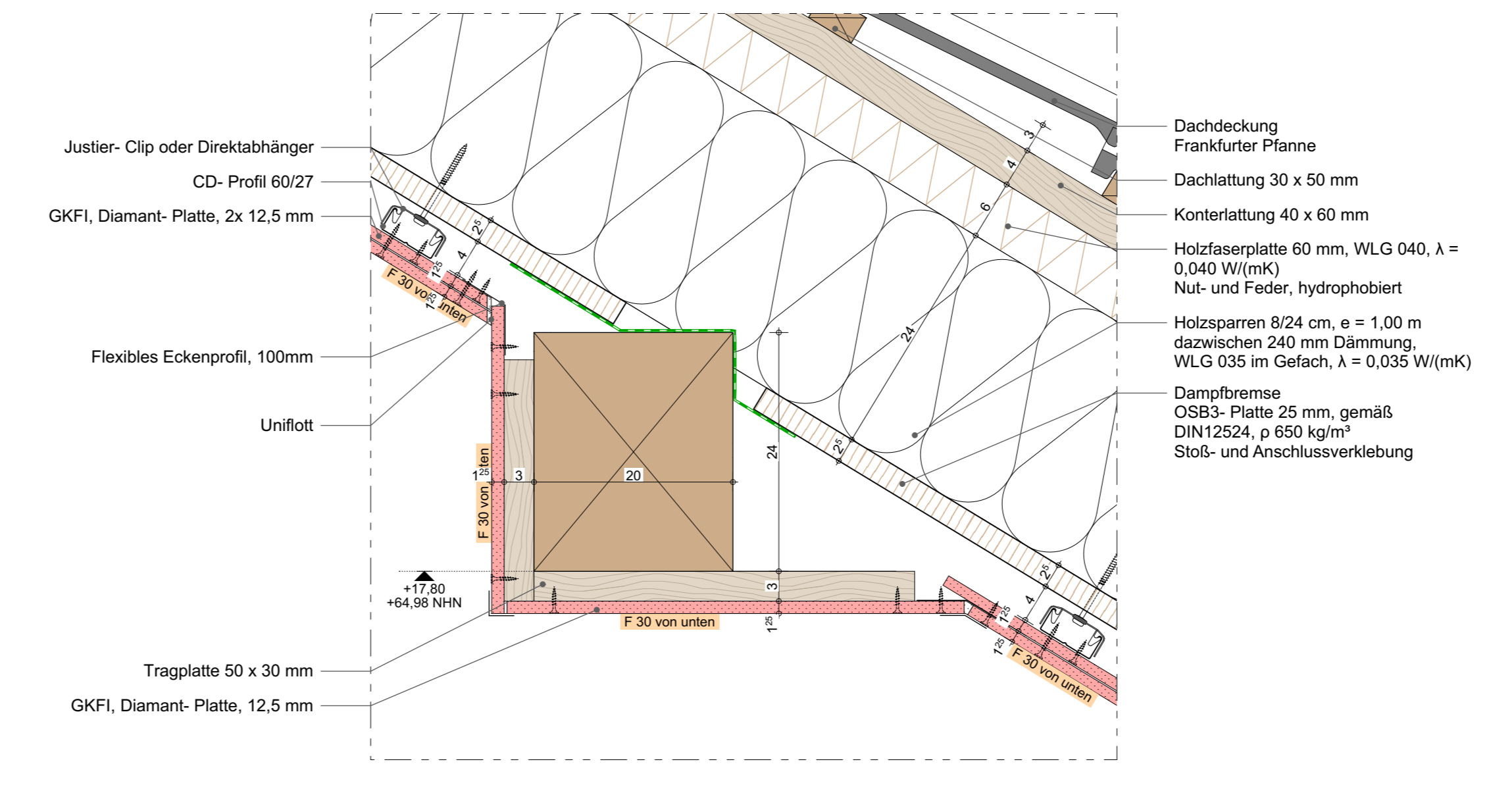
D- 58 Decke 1:5

D- 60 Decke



D- 61 Decke 1:5

D- 63 Pfette Holz



D- 64 Decke 1:5

Material Dämmung, Material Bauteile, and project information including address, contact details, and a table for index changes.

Alle Maße sind am Bau zu prüfen! Unstimmigkeiten sind der Bauleitung mitzuteilen!

Table with columns: Index, Datum, Änderung, Gez. and a table for VORABZUG 26.11.2021.

Planocodierung 211126 MARK42\_02\_AR\_5\_03\_...\_xx\_431\_A\_P\_431 Kehlbalckendecke, Planungsphase P5, Planinhalt Dachgeschossausbau und Aufzugsanbau, Datum 26.11.2021, Planformat 1403 x 621mm.